

RO547

ARRIVAL OF THE BRIDGE

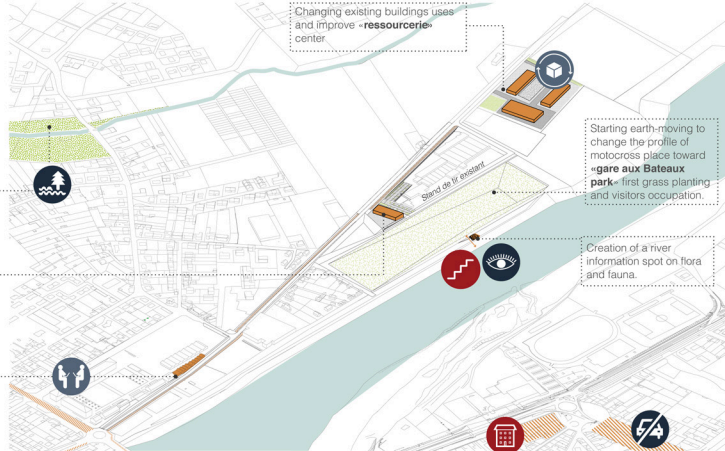
The new bridge construction will need more time to be studied and built. However the revitalization of the 2 banks can start earlier thanks to the «alliés» and some specific developments. This three diagrams illustrate an example of a progressive evolution.

Improvement and maintenance of **Chinard** stream for walking place. Spot dedicated to the stream ecosystem and water system of the Iller river.

Move and extension of existing «Espace Nature du Val d'Allier» and «Ligue de Protection des Oiseaux» in a **Environment Educational Center**, an interactive place dedicated for school groups and tourism.

Creation of a **FabLab**, open self service space with tools and machines for making. Dedicated to contractors, designers, students. **Open cooking space** linked to AMAP.

FIRST AVANCEE: Getting ready



SECOND AVANCEE: The bridge

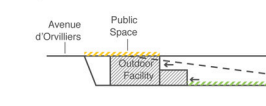
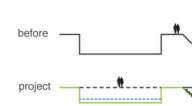


Monthly Road. Move and extension of supermarket Intermarché.

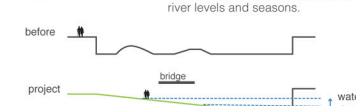
Existing housing backyard densification making a more vibrant downtown area.

Temporary occupation of former supermarket with outdoor sports: «blocs climbing», «parkour», skate-park, and coffee and food spot. Reducing former parking place and residents intervention changing it in a more vegetal area.

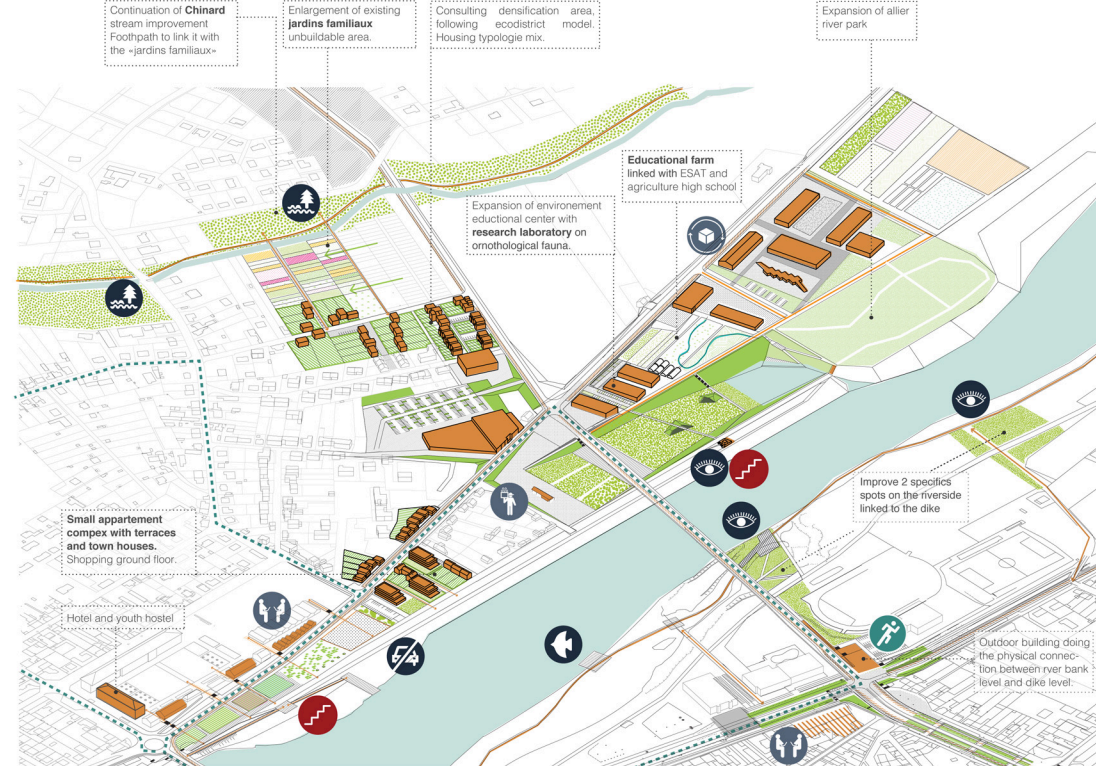
Workshop promoting stage jobs and sewing practices, graduating trainings. Permeability increase with Montilly road and river bank square.

Outdoor facility vertical connection
longitudinal section«Gare aux bateaux» park
cross section

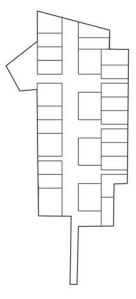
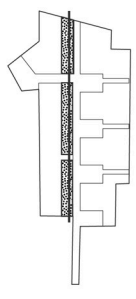
longitudinal section



THIRD AVANCEE: Reinforcement and intensification

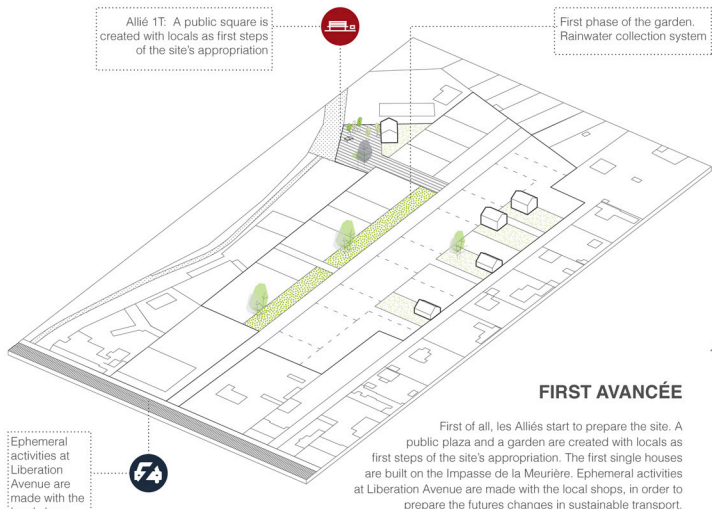
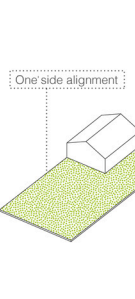
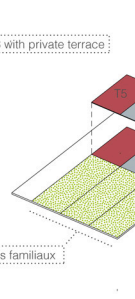
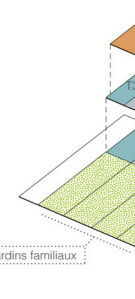
LIVING IN THE LEFT BANK
La Mourière Ecoquartier

The Madeleine district and its suburb fabric directly related to the bocage provide a credible alternative to the dispersion to the peripheral municipalities. Along with this eco-district it will be to implement a method of collaborative and interactive densification. Placing people at the center of the Madeleine process of the project makes them players in the preservation and enhancement of the identity of the neighborhood. The large plot of Mourière is the opportunity to develop a group of quality accommodation offering an alternative to monotonous alignments.

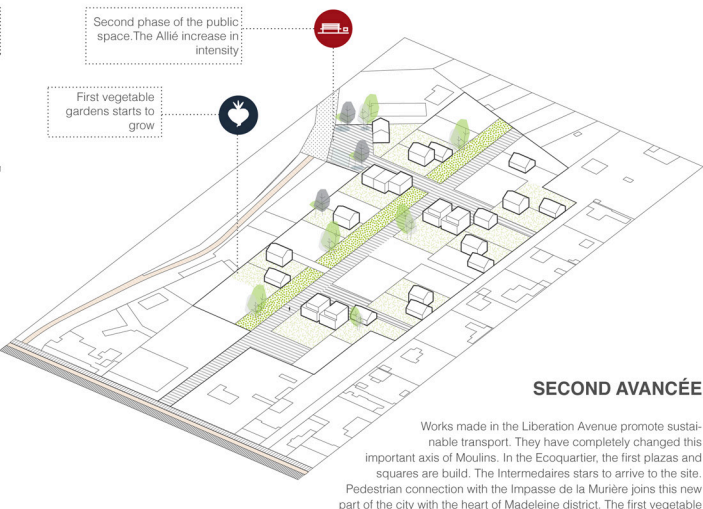


Les typologies

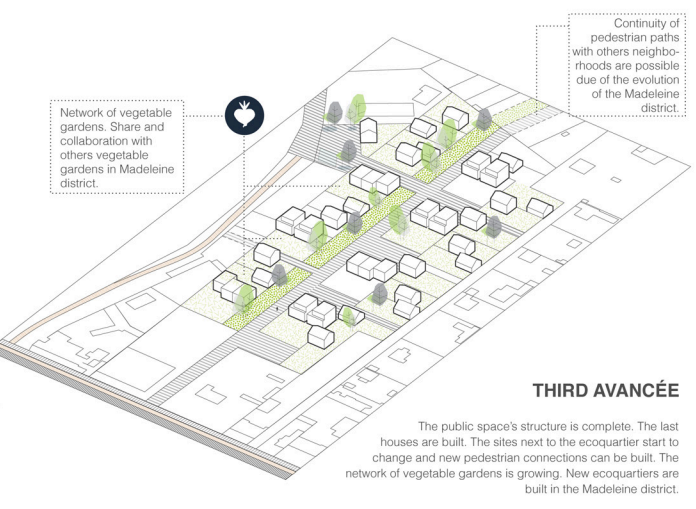
The combination of these typologies is not fixed. Intermediate housing, strip or houses are organized around structural squares hosting the parking lots. An invisible grid can combine different typologies according market demand. All typologies are north-south oriented and private gardens provide intimacy. The intermediate housing offers private terraces that preserve garden's intimacy. With all these housing typologies the project offers residential possibilities to every age families.



FIRST AVANCEE



SECOND AVANCEE



THIRD AVANCEE

